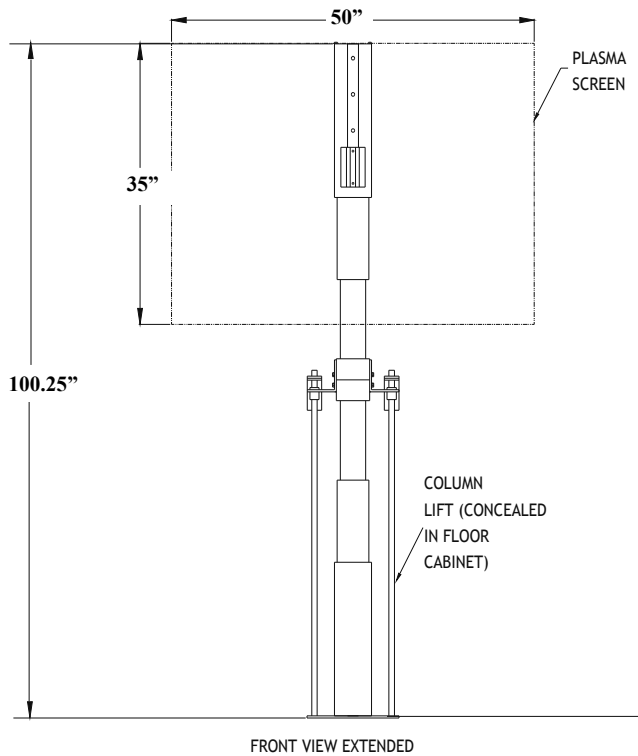


SVS FLOOR CABINET LIFTS

For Display screens

SVS COLUMN

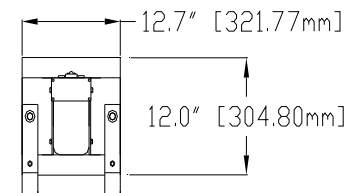


PRODUCT FEATURES

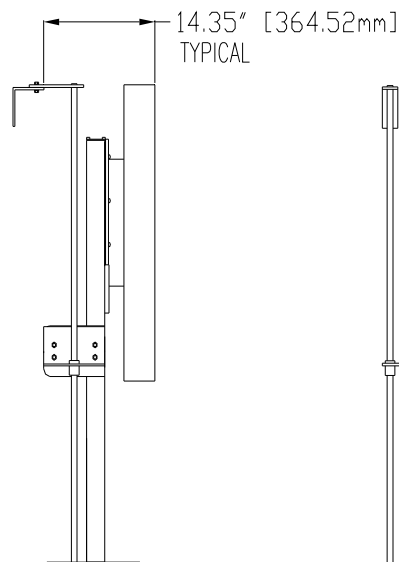
Designed to support up to 60" display screens (depending on weight and overall dimensions of the screen), the Column Lift conceals the screen in a floor cabinet when not in use and raises it for viewing.

- Supports 40", 50" & some 60" display screens
 - Two positions (*up* and *down*): the screen is stored in the floor cabinet when not in use and lowered for viewing
 - Quiet & Strong Motor
 - Low Voltage controller (24VAC) supplied with the lift
 - Lift supplied with bottom base plate & screen mount adapter
 - Warranty: 1 Year parts and 90 day factory labor.
- Note: Floor cabinet not supplied*

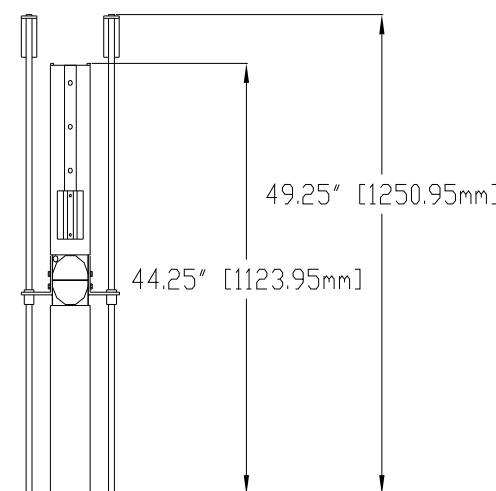
TOP VIEW



SIDE VIEW



FRONT VIEW



SPECIFICATIONS

Overall Unit Size (W X H X D)	12.67" x 49.25" x 12" [322 mm x 1251 mm x 305 mm]
Travel/Stroke Distance	51" [1295.4mm]
Maximum Speed	4.8"/second
Lifting Capacity	Up to 140 lbs. [63.5 kg]
Net Weight	90 lbs [40.82 kg]
Approx. Shipping Weight (lift only)	150 lbs [68 kg]

STANDARD SPECIFICATIONS

Voltage	110v/220V, 60/50hz
Current Draw	2 amps [110v], 1 amps [220v]
Control Voltage	24 VAC (contact closure)
Materials	Steel/Aluminum

RECOMMENDED ACCESSORIES

PMT-9 - Fixed mounting bracket used to attach the flat panel display to the lift

Closure Adapter Kit- Used to attach cabinet top

(* Custom accessories/non-returnable)

Eastern Sales/ Main Office
Tel: 850-522-4747
Fax: 850-522-4739

Western Sales Office
Tel: 928-774-4190
Fax: 928-774-4111

International Sales Office
Tel: 001-928-774-4190
Fax: 001-928-774-4111

www.svslifts.com
sales@svslifts.com