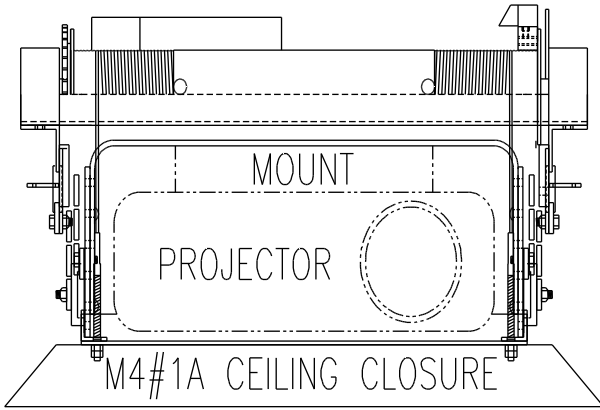


SVS CEILING LIFTS

For Small Projectors

SVS M2X Series



PRODUCT FEATURES

- Supports projectors up to 15" Wide x 16" Deep [381 mm x 406.4mm] -depth must include lens and video cable connections
- Ideal Solution for installations with restricted space (projector installed inside the lift – between scissors- to minimize vertical height)
- Lowering distances from 33" to 66" [0.83 m to 1.67m]
- Lowers through a 24" x 24" opening [610 mm x 610 mm]
- Three positions: Stored, Show (adjustable) & Service
- Includes 24VAC wall plate controller for low voltage control & standard video cable management system
- Very quiet operation
- Warranty: 5 Year parts, 1 year motor & 90 day factory labor

SPECIFICATIONS

LIFT MODEL	MAXIMUM LOWERING DISTANCE	VERTICAL HEIGHT OF LIFT IN CLOSED POSITION (1) (CEILING CLOSURE NOT INCLUDED)	INSIDE VERTICAL CLEARANCE FOR PROJECTOR AND PROJECTOR MOUNT	PHYSICAL DIMENSIONS		NET WEIGHT
				WIDTH	DEPTH	
M2X-33	33" /0.83m	11.5" /29.21 cm	6.43" /16.33 cm	Top Frame: 22" /55.88 cm Bottom Frame: 19.25" /48.89 cm	18.625" /47.30 cm	61 lbs /27.6kg
M2X-44	44" /1.11m	12.5" /31.75 cm	7.43" /18.87 cm			66 lbs /29.9 kg
M2X-55	55" /1.39m	13.5" /34.29 cm	8.43" /21.41 cm			71 lbs /32.2 kg
M2X-66	66" /1.67m	14.5" /36.83 cm	9.43" /23.95 cm			76 lbs /34.4kg

(1) Vertical height may vary depending on height of projector. Supporting structure is additional

STANDARD SPECIFICATIONS

Voltage	110v/220V, 60/50hz
Current Draw	.3 amps [110v], .15 amps [220v]
Control Voltage	24 VAC (contact closure)
Materials	Steel/Aluminum/Nylon

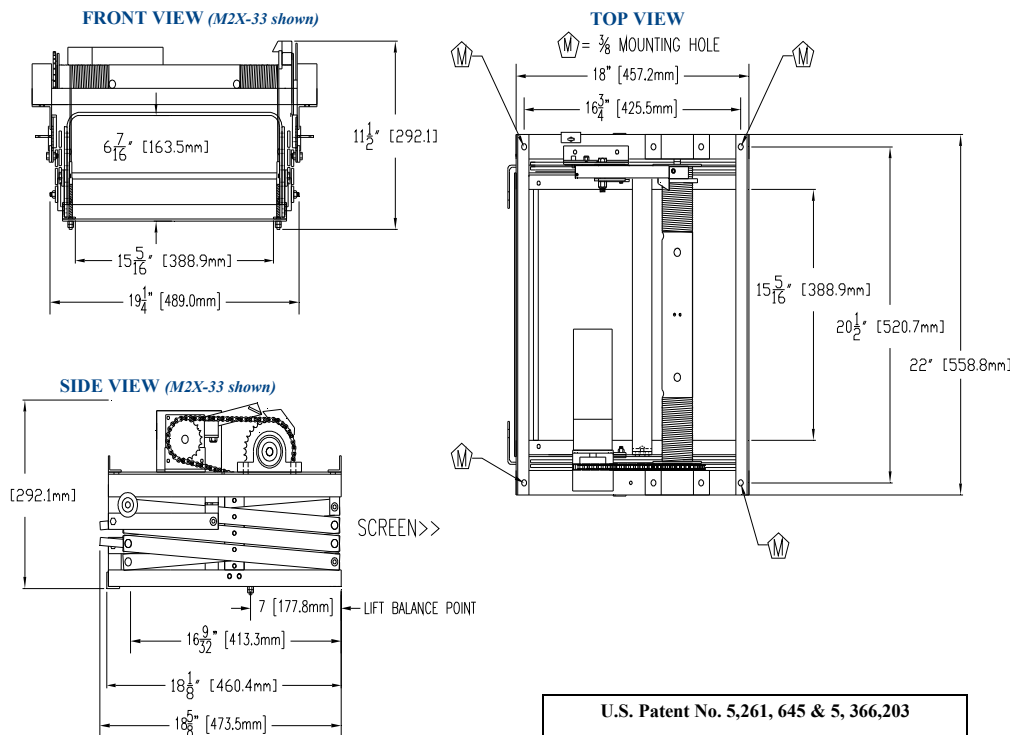
RECOMMENDED ACCESSORIES

M4#1A – Lipless spring-loaded ceiling closure for a 2X2 ceiling opening. Models for 15/16" or 9/16" Ceiling T-Bar. Can be used with dry wall ceiling- supplied unpainted.

FP1 Ceiling Closure -Lipped or Lipless fixed mounted ceiling closure panel for a 2X2 opening- Models for both 15/16" & 9/16" T-Bar. Can be used with dry wall ceiling. Supplied unpainted.

#2 Plenum Shroud – Protective metal cover for lift & projector in air plenum rated ceiling.

#9 Mount - Mounting bracket used to attach the projector to the saddle of the lift in an inverted position (model varies with the projector model).



U.S. Patent No. 5,261, 645 & 5,366,203