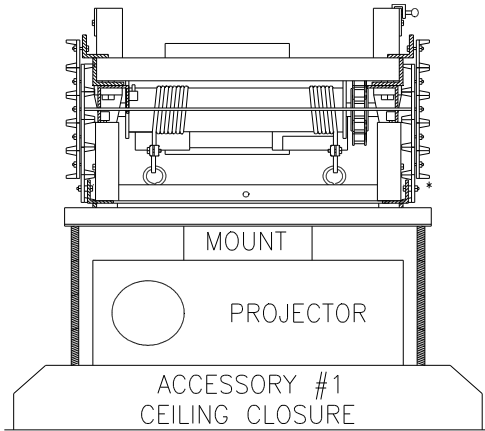


# SVS CEILING LIFTS

For small projectors

# SVS Mini 4 Series



## PRODUCT FEATURES

- Small footprint- Supports small to medium size projectors
- Lowering distances from 3'6" to 6' [1.07 m to 1.83m]
- Lifting Capacity up to 200 lbs [90.75 kg]
- Three positions: Stored, Show (adjustable) & Service
- Includes 24VAC wall plate controller for low voltage control & standard video cable management system.
- Very quiet operation
- Warranty: 5 Year parts, 1 year motor & 90 day factory labor

## SPECIFICATIONS

| LIFT MODEL | MAXIMUM LOWERING DISTANCE | VERTICAL HEIGHT OF LIFT IN CLOSED POSITION (1)<br>LIFT ONLY | PHYSICAL DIMENSIONS |                 |                   |                   |
|------------|---------------------------|---|---------------------|-----------------|-------------------|-------------------|
|            |                           |   | WIDTH               | DEPTH           | NET WEIGHT        | SHIPPING WEIGHT   |
| MINI 4-3   | 3'6" /1.07 m              | 12" / 305 mm  | 18" /457.2 mm       | 23.5" /596.9 mm | 100 lbs /45.36 kg | 140 lbs /63.5 kg  |
| MINI 4-5   | 4'9" /1.45m               | 15" /381mm  |                     |                 | 110 lbs /49.90 kg | 150 lbs /68 kg    |
| MINI 4-6   | 6'0" /1.83m               | 18" /457 mm   |                     |                 | 120 lbs /54.43 kg | 180 lbs /81.64 kg |

(1) Vertical height does not include projector, projector mount and ceiling closure. Supporting structure is additional

## STANDARD SPECIFICATIONS

|                        |                                 |
|------------------------|---------------------------------|
| <b>Voltage</b>         | 110v/220V, 60/50hz              |
| <b>Current Draw</b>    | .3 amps [110v], .15 amps [220v] |
| <b>Control Voltage</b> | 24 VAC (contact closure)        |
| <b>Materials</b>       | Steel/Aluminum/Nylon            |

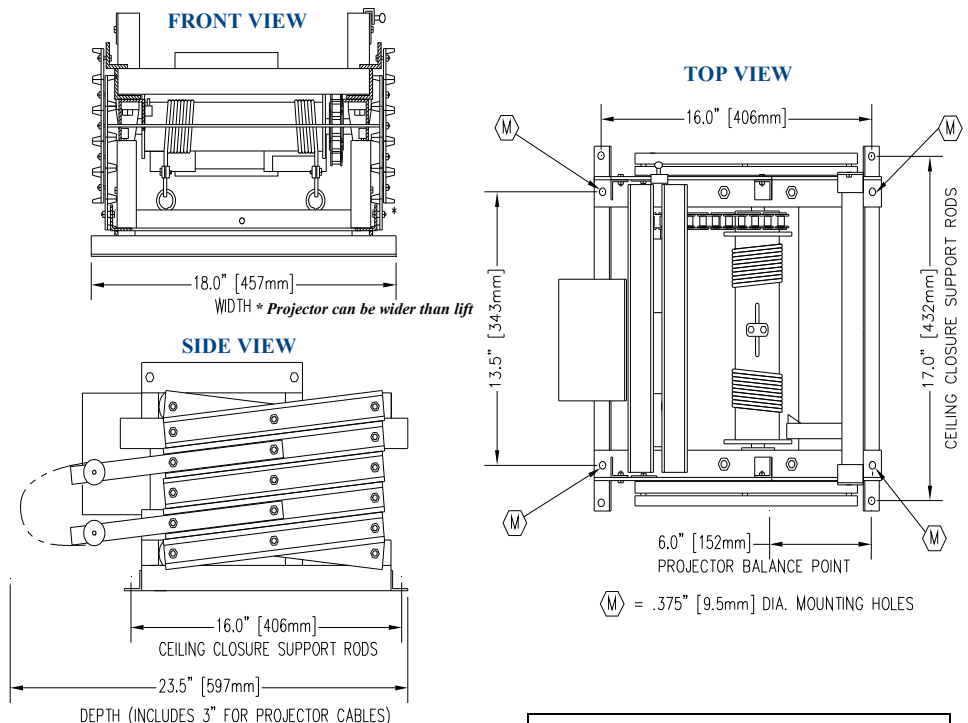
## RECOMMENDED ACCESSORIES

**#1 Ceiling Closure** - Self-aligning closure system complete with ceiling framework. Supplied with 15/16" ceiling trim ring. Designed to accept ceiling tile or dry wall ceiling. Supplied unpainted.

**FP1 Ceiling Closure** -Fixed mounted flat closure panel- Lipped or Lipless. Supplied with 15/16" ceiling trim ring. Ceiling material attaches to the bottom of the panel or closure may be painted. Supplied unpainted.

**#2 Plenum Shroud**- Protective Metal cover for lift lift and projector in air plenum rated ceiling.

**#9 Mount** - Mounting bracket used to attach the projector to the saddle of the lift in an inverted position (model varies with the projector model).



U.S. Patent No. 5,261, 645 & 5, 366,203

Eastern Sales/ Main Office  
Tel: 850-522-4747  
Fax: 850-522-4739

Western Sales Office  
Tel: 720-283-6410  
Fax: 720-283-6424

International Sales Office  
Tel: 001-720-283-6410  
Fax: 001-720-283-6424

www.svslifts.com  
sales@svslifts.com