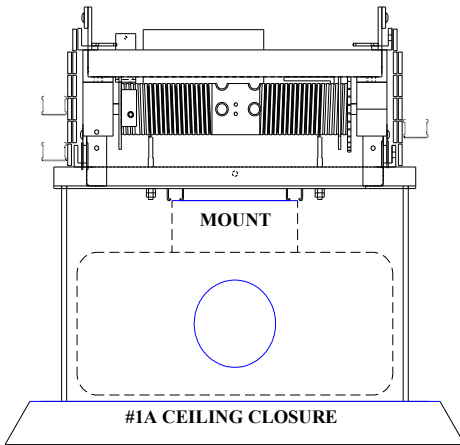


# SVS CEILING LIFTS

For projectors up to 17" Wide x 20" Deep with lens

# SVS TL1 (2x2) Series



## PRODUCT FEATURES

- Supports projectors up to 17" Wide x 20" Deep [432 mm x 508mm]- depth must include lens and video cable connections
- Lowers through a 24" x 24" opening [610 mm x 610 mm]
- Lowering distances from 45.5" to 72.8" [1.15 m to 1.85m]
- Lifting Capacity up to 75 lbs [34 kg]
- Three positions: Stored, Show (adjustable) & Service
- Includes 24VAC wall plate controller for low voltage control, #16 video cable management system and 2x2 lipless ceiling closure (M4#1A).
- Very quiet operation
- Warranty: 5 Year parts, 1 year motor & 90 day factory labor

| LIFT MODEL   | MAXIMUM LOWERING DISTANCE | VERTICAL HEIGHT OF LIFT IN CLOSED POSITION (1)<br>LIFT ONLY | PHYSICAL DIMENSIONS |              |                   |                   |
|--------------|---------------------------|---|---------------------|--------------|-------------------|-------------------|
|              |                           |   | WIDTH               | DEPTH        | NET WEIGHT        | SHIPPING WEIGHT   |
| TL1-45 (2x2) | 45.5" / 1.15 m            | 9" / 229 mm   | 19.21" / 488 mm     | 19" / 483 mm | 59 lbs / 26.7 kg  | 99 lbs / 45 kg    |
| TL1-54 (2x2) | 54.6" / 1.38m             | 10" / 254mm   |                     |              | 66 pounds / 30 kg | 106 lbs / 48 kg   |
| TL1-63 (2x2) | 63.7" / 1.61m             | 11" / 279 mm  |                     |              | 72 lbs / 32.6 kg  | 112 lbs / 51 kg   |
| TL1-72 (2x2) | 72.8" / 1.85m             | 12" / 305mm   |                     |              | 80 lbs / 36.28 kg | 120 lbs / 54.4 kg |

(1) Vertical height does not include projector, projector mount and ceiling closure. Supporting structure is additional

## STANDARD SPECIFICATIONS

**Voltage** 110v/220V, 60/50hz  
**Current Draw** .66 amps [110v], .33 amps [220v]  
**Control Voltage** 24 VAC (contact closure)  
**Materials** Steel/Aluminum/Nylon

## RECOMMENDED ACCESSORIES

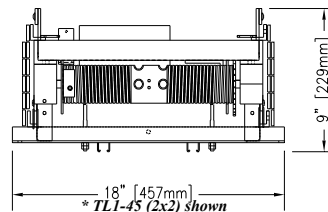
**M4#1A** – Lipless spring-loaded ceiling closure for a 2X2 ceiling opening. Models for 15/16" or 9/16" Ceiling T-Bar. Can be used with dry wall ceiling- supplied unpainted.

**FP1 Ceiling Closure** -Lipped or Lipless fixed mounted ceiling closure panel for a 2X2 opening- Models for both 9/16" & 15/16" T-Bar. Can be used with dry wall ceiling. Supplied unpainted.

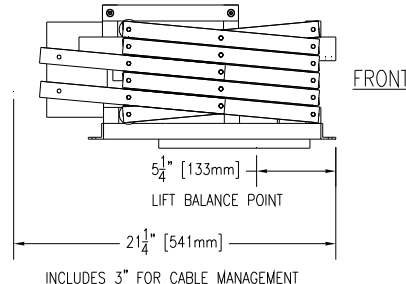
**#2 Plenum Shroud**- Protective Metal cover for lift lift and projector in air plenum rated ceiling.

**#9 Mount** - Mounting bracket used to attach the projector to the saddle of the lift in an inverted position (model varies with the projector model).

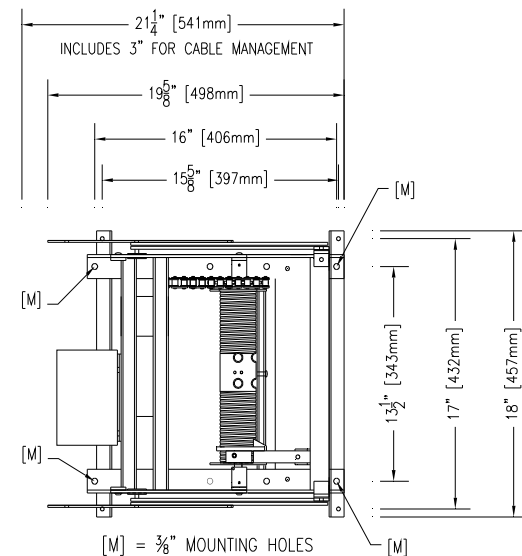
### FRONT VIEW



### SIDE VIEW



### TOP VIEW



U.S. Patent No. 5,261, 645 & 5, 366,203

Eastern Sales/ Main Office  
 Tel: 850-522-4747  
 Fax: 850-522-4739

Western Sales Office  
 Tel: 720-283-6410  
 Fax: 720-283-6424

International Sales Office  
 Tel: 001-720-283-6410  
 Fax: 001-720-283-6424

www.svslifts.com  
 sales@svslifts.com