

SVS PATENTED DRUM LOCK SAFETY FEATURE

EXCLUSIVELY ON ALL SVS LIFTS

ARM IS LIFTED ONLY IN THE DOWN MODE BY THE ENGERIZED SOLENOID.

WHEN LIFT HAS NO POWER OR IS IN THE UP MODE, ARM IS ALWAYS DOWN.

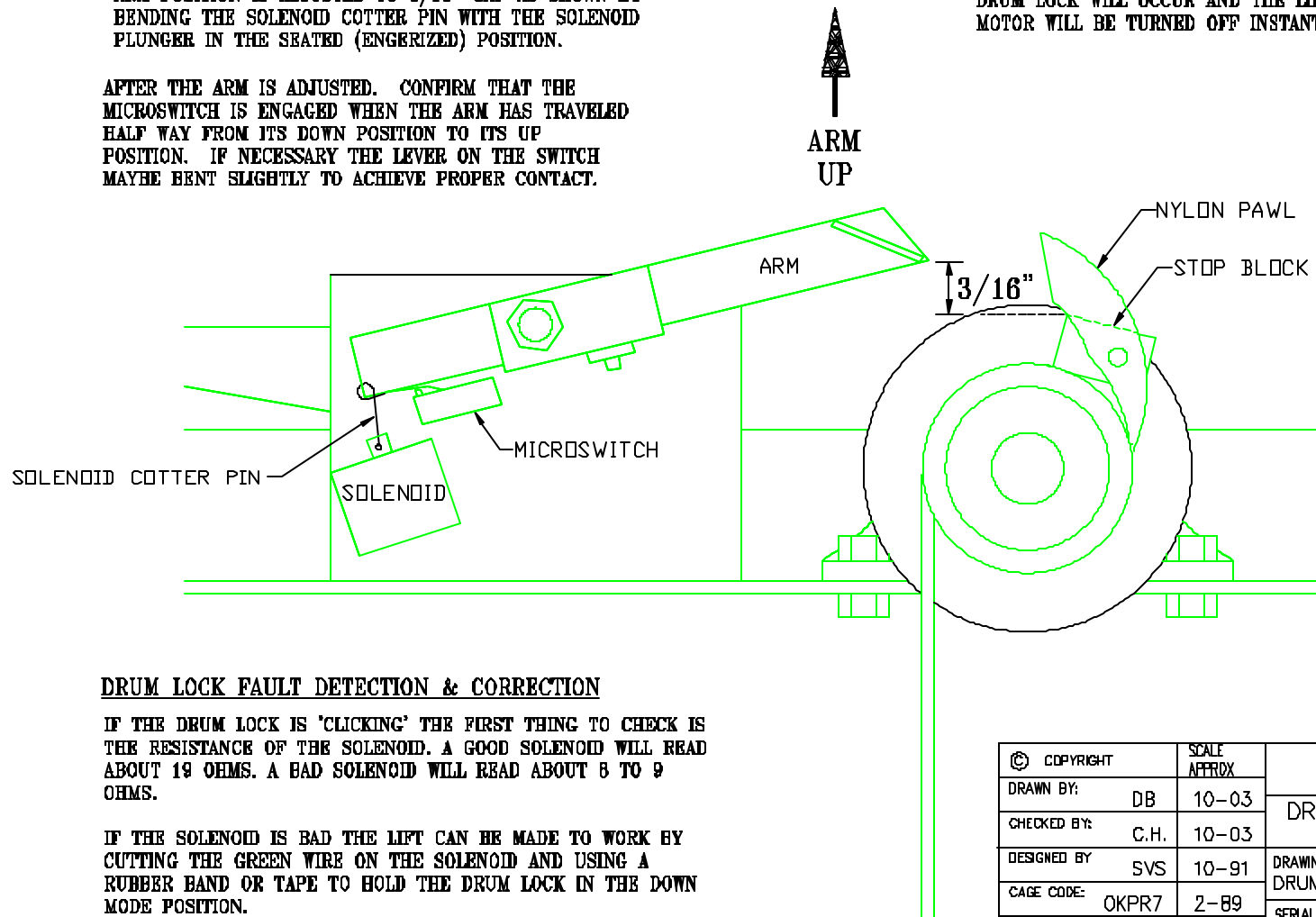
ARM POSITION IS ADJUSTED TO 3/16" GAP AS SHOWN BY BENDING THE SOLENOID COTTER PIN WITH THE SOLENOID PLUNGER IN THE SEATED (ENGERIZED) POSITION.

AFTER THE ARM IS ADJUSTED. CONFIRM THAT THE MICROSWITCH IS ENGAGED WHEN THE ARM HAS TRAVELED HALF WAY FROM ITS DOWN POSITION TO ITS UP POSITION. IF NECESSARY THE LEVER ON THE SWITCH MAYBE BENT SLIGHTLY TO ACHIEVE PROPER CONTACT.

NYLON PAWL DROPS WHEN AT TOP OF DRUM AT NORMAL LOWERING SPEED.

IF THE LOWERING SPEED IS EXCESSIVE THE NYLON PAWL WILL CATCH THE ARM.

DRUM LOCK WILL OCCUR AND THE LIFT WILL STOP AND THE MOTOR WILL BE TURNED OFF INSTANTLY.



DRUM LOCK FAULT DETECTION & CORRECTION

IF THE DRUM LOCK IS 'CLICKING' THE FIRST THING TO CHECK IS THE RESISTANCE OF THE SOLENOID. A GOOD SOLENOID WILL READ ABOUT 19 OHMS. A BAD SOLENOID WILL READ ABOUT 8 TO 9 OHMS.

IF THE SOLENOID IS BAD THE LIFT CAN BE MADE TO WORK BY CUTTING THE GREEN WIRE ON THE SOLENOID AND USING A RUBBER BAND OR TAPE TO HOLD THE DRUM LOCK IN THE DOWN MODE POSITION.

© COPYRIGHT	SCALE APPROX	SVS INC.	
DRAWN BY: DB	10-03	DRUM LOCK ADJUSTMENT US PATENT #5,281,845	
CHECKED BY: C.H.	10-03	DRAWING NO. DRUM_LOCK	DESCRIPTION ADJUSTMENT
DESIGNED BY: SVS	10-91	SERIAL NO.	RELEASE DATE 11/05/03
CAGE CODE: OKPR7	2-89		
PHONE: 850-522-4747			