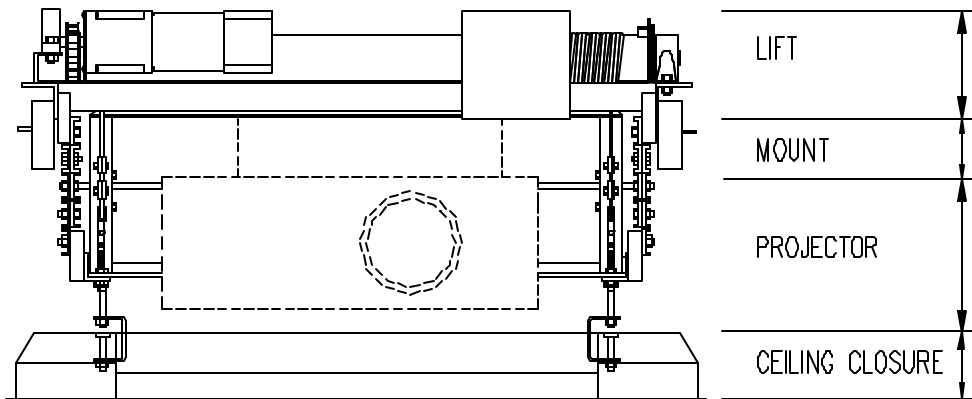


SVS 7, 7EX & 7EXRD SERIES PROJECTOR LIFT WORKSHEET

(USED TO DETERMINE APPROXIMATE CEILING SPACE REQUIREMENTS)



| LIFT HEIGHT | |
|----------------|---------------------|
| MODEL | HEIGHT |
| 7,7EX,7EXRD-9 | 16.0 INCHES [406mm] |
| 7,7EX,7EXRD-11 | 17.5 INCHES [445mm] |
| 7,7EX,7EXRD-13 | 19.0 INCHES [483mm] |
| 7,7EX,7EXRD-15 | 20.5 INCHES [521mm] |
| 7,7EX,7EXRD-18 | 22.0 INCHES [559mm] |
| 7,7EX,7EXRD-20 | 23.5 INCHES [597mm] |
| 7,7EX,7EXRD-22 | 25.0 INCHES [635mm] |

| | <u>COLUMN A</u> | | <u>COLUMN B</u> |
|---|-----------------|--|-----------------|
| SVS LIFT ABOVE MOUNT HEIGHT | 6 INCHES | | |
| ADD SVS #9 MOUNT HEIGHT | | CAN RANGE FROM 2 TO 4.5 INCHES. 3.5 INCHES IS STANDARD. | |
| ADD PROJECTOR/MONITOR HEIGHT | | OVERALL HEIGHT OF PROJECTOR OR MONITOR BELOW #9 MOUNT. | |
| TOTAL HEIGHT OF LIFT, MOUNT, & PROJECTOR/MONITOR = | | ← CONTINUE WITH HIGHEST NUMBER. IF EQUAL CONTINUE WITH COLUMN B. → | |
| ADD SVS #1 CEILING CLOSURE, HEIGHT IS 1.5 TO 5 INCHES. 4 INCHES IS STANDARD. | | | |
| ADD 2 INCHES IF PLENUM SHROUD IS USED. | | | |
| TOTAL HEIGHT = | | ← CEILING SPACE CLEARANCE → | |

- * ALL DIMENSION ARE IN INCHES, UNLESS OTHERWISE INDICATED
- * SPECIFICATIONS & ILLUSTRATIONS ARE BASED ON INFORMATION AT TIME OF PRINTING.
- * THE RIGHT IS RESERVED TO MAKE CHANGES IN SPECIFICATIONS, MATERIALS, MODELS, AND APPERANCE OR TO DISCONTINUE MODELS AT ANY TIME WITHOUT NOTICE.
- * IF YOU HAVE ANY QUESTION OR NEED MORE INFORMATION PLEASE CONTACT SVS AT 850-522-4747 OR SALES@SVSLIFTS.COM

TOTAL HEIGHT DOES NOT INCLUDE SUPPORT STRUCTURE FOR LIFT. (UNISTRUT, ANGLE IRON, THREADED ROD, ETC.)

US PATENT # 5,261,645 & # 5,366,203