



SVS COLUMN LIFT DISPLAY SCREEN LIFT

INSTALLATION MANUAL

WARNING

DO NOT disconnect the telescoping column unit from the microprocessor control unit while the telescoping column is at its end stops (fully extended or fully retracted).

If you disconnect the telescoping column from the microprocessor unit while the lift is at its end stops, the lift will lose synchronization. Call SVS for repair. This repair is not covered by the lift warranty.

SVS, INC.

2513 Jenks Avenue
Panama City, FL 32405
www.svslifts.com

Lifting Your Image

Tel: 850-522-4747
Fax: 850-522-4739
sales@svslifts.com

SVS COLUMN LIFT

INSTALLATION MANUAL

SECTIONS:

1. General Description
2. Warnings
3. Preliminary Installation Checks
4. Dimensional Information
5. Lift Installation
6. Electrical Wiring and Lift Control
7. Mounting Screens and Projectors
8. Cable Management
9. Drawings and Schematics

SVS TMD Lift Warranty

Specifications and illustrations are based on information at time of printing. SVS, Inc. reserves the right to make changes in specifications, materials, models, and appearance or discontinue models at any time without notice.

If you have any questions, comments, or need more information please contact SVS at 850-522-4747 or sales@svslifts.com

1. GENERAL DESCRIPTION

The Column Lift is a convenient and cost-effective solution for commercial and residential applications. The SVS Column Lift is designed to raise plasma and LCD screens out of furniture. The Column can handle up to 60-inches diagonal screens.

Key features:

- Supports plasma or LCD screens up to 60-inches (152.4 cm) diagonal
- Two positions (raised and lowered)
- Quiet & strong motor (140 lbs/ 80.28 kg lifting capacity)
- Lift supplied with bottom plate and LCD mount adaptor.
- One-year parts and 90-day factory labor warranty.

TMD LIFT SPECIFICATIONS

Overall Unit Size (W x H x D)*	12.67 x 49.25 x 12 inches 32.18 x 129.54 x 30.48 cm
Overall Size with Optional Closure Adapter Kit (W x H x D)*	24 x 50 3/16 x 15.5 inches 60.9 x 127.5 x 39.4 cm
Travel/Stroke Distance	51-inches (129.6 cm)
Lift Capacity	140 lbs (63.5 kg)
Net Weight	90 lbs (40.8 kg)
Materials	Steel / Aluminum/ Plastic

* Dimensions do not include plasma screen, LCD screen, or accessories.

ELECTRICAL SPECIFICATIONS

Voltage	110v – 220v/50-60 Hz
Current	2-amp/1 amp

**PLEASE READ THROUGH ALL INSTRUCTIONS BEFORE INSTALLING THE LIFT.
IF YOU HAVE ANY QUESTIONS, PLEASE TO CALL SVS AT 850-522-4747.**

2. WARNINGS

- **DO NOT disconnect the telescoping column unit from the microprocessor control unit while the telescoping column is at its end stops (fully extended or fully retracted). *If you disconnect the telescoping column from the microprocessor unit while the lift is at its end stops, the lift will lose synchronization. Call SVS for repair. This repair is not covered by the lift warranty.***
- The SVS Column Lift is a motorized device. Keep all individuals and obstructions clear from the lift path during operations. Keep fingers and other objects away from all moving parts. **Children should not be allowed to operate the lift without adult supervision.**
- Handling the lift improperly may cause personal injury or damage the lift.
- The Column Lift is provided with a standard AC power cord. The Column Lift is designed to use a standard wall socket. **A qualified electrician must do any other electrical wiring. Always follow local building and electrical codes.**

3. PRE-INSTALLATION CONSIDERATIONS

- Please inspect the unit for any shipping damage. If the lift has been damaged during transport, do not proceed with the installation. Please contact SVS.
- Ensure that you have the require space to install the Column Lift with your screen attached.
- Ensure that your cabinet will support the weight of the Column lift and screen.
- Consider how you will install the necessary cabling for the lift and screen (control, audio, video, and/or AC Power cables).
- Do not install the screen on the lift until the lift, hardware, and any other accessories have been properly installed and are operational. Failure to maintain proper clearance could result in damage to the screen, furniture, and/or lift.
- The upper limit of the Column Lift has been adjusted at the factory. Adjustment of the upper limit by other than SVS personal will void the lift warranty.
- The weight of the screen should be balanced right to left on the lifts telescoping column.
- Consider how you will access the lift and electrical connections after the lift is installed.

4. DIMENSIONAL INFORMATION

- The Column Lift is 12.67-inches (32.18 cm) wide by 12-inches (30.48 cm) deep by 49.25-inches (129.54 cm) high in the lowered/closed position. The raised/open height is 100.25-inches (254.5 cm).
 - *Inside cabinet height* will need to be at least 49.25-inches. And 50 3/16-inches with the Closure Adapter Kit.
 - *Inside cabinet width* will be determined by the width of the plasma/LCD screen. Remember to allow adequate clearance on each side of the screen. If you are using the Closure Adapter Kit your inside width will need to be at least 24-inches.
 - *Inside cabinet depth* must be at least 12-inches to accommodate the Column lift for Plasma and LCD screens with a combined screen and mount depth of 4-inches or less. If you screen and mount depth are greater than 4-inches, the inside depth will need to be more than 12-inches.
 - *Inside cabinet depth* will need to be at least 15.5-inches with the Closure Adapter Kit. The Closure Adapter extends 5 1/8 – inches from the front of the telescoping column, if the combined depth of your screen and screen mount is more than 5 1/8 – inches, you will require additional depth.

See Column Dimension in Section 9.

5. LIFT INSTALLATION

Before beginning the installation, check the dimensions of the SVS Column Lift and plasma/LCD screen with the available space within the cabinet.

The SVS Column Lift can be used with a variety of plasma/LCD screens and installed into various pieces of furniture; there are no specific instructions for installing the Column lift. Please use the following guidelines.

Uncrate the Lift

- Remove the Column Lift crate top. (The Column Lift should be transported in a horizontal position to prevent damage to the lift.)
- Carefully remove the packing material and lift restrains from around the lift.
- Carefully remove the lift.
- Please retain all packing material until installation is complete.

The Column consist of:

- Telescoping Column (with Microprocessor control unit)
- Two button control switch (with 1.5-meter cord)
- Installation Instruction Package

Lift Accessories may be shipping separately.

WARNING

DO NOT disconnect the telescoping column unit from the microprocessor control unit while the telescoping column is at its end stops (fully extended or fully retracted).

Testing the SVS Column Lift

- Step 1. Connect the 1.5 Meter two button control switch to the 7-pin plug to the port labeled "HS" on the microprocessor control unit attached to the telescoping column.
- Step 2. Supply power to the Lift. Connect the power cord from the microprocessor control unit to a suitable 110 VAC outlet.
- Step 3. The Column Lift is now controllable with the two-button control switch. Ensure that the Column lift will open to it full height and retract to its closed position.

Mounting the lift

- Mount the column to the inside of your cabinet using the four 3/8-inch mounting holes. **See the Column Dimension drawing in Section 9.**
- The lift should be mounted so that the your closure panel will be even with your furniture top with the lift in the lowered position.
- Mount the two-button switch in a convenient location to control the lift and allow the 1.5-meter two-button switch cord to connect to the microprocessor control unit.

- Remember to allow access to service the telescoping column and microprocessor control unit.

Closure Suggestions

- You can attach your closure panel to the top of your plasma/LCD screen, to the top of the telescoping column, or to the Closure Adapter Kit plate.
- SVS recommends that for safety that the closure panel be "floating" and not bolted to the plasma/LCD screen, telescoping column, or Closure Adapter Plate. This will prevent body parts or objects from being pinched between the closure panel and cabinet when the lift closes. Velcro style fasteners can be used to secure the closure panel.
- The closure panel can be sloped to self-center and set into the cabinet top when lowered.
- The opening width for your screen should be your screen width plus 2-inches. The opening depth should be your screen depth plus your screen mount depth plus 8-inches. With the Closure Adapter Kit Accessory the minimum opening should be 26-inches wide by 13 1/2-inches deep. The Closure plate extends 5 1/8 - inches in front of the lift column. If your combined screen and mount depth exceeds 5 1/8 - inches you will require an opening depth more than 13 1/2-inches.

6. Electrical Wiring and Lift Control

WARNING

DO NOT disconnect the telescoping column unit from the microprocessor control unit while the telescoping column is at its end stops (fully extended or fully retracted).

Electrical Wiring

- Step 1. Connect the 1.5 Meter two button control switch to the 7-pin plug to the port labeled "HS" on the microprocessor control unit attached to the telescoping column.
- Step 2. Supply power to the Lift. Connect the power cord from the microprocessor control unit to a suitable 110 VAC outlet.
- Step 3. The Column Lift is now controllable with the two-button control switch. Ensure that the Column lift will open to its full height and retract to its closed position.

See Column Wiring Drawing in Section 9.

Lift Control

The Column Lift is normally controlled using the supplied two-button switch. Pressing the UP arrow raises the lift and pressing the DOWN arrow lowers the lift.

If the Column lift was ordered with the option to connect it to an external controller. Connect the white wire to the green wire to raise the lift. Connect the white wire to the black wire to lower the lift. The maximum wiring length from the microprocessor control unit to the external control relay or switch cannot exceed 6 foot. See the picture in Section 9 if you want to add the required wires to

the Two Button switch for external control. For wiring suggestions *see External Wiring Options 1 and 2 in Section 9.*

The TMD Relay Accessory provides the connections to the TMD Two Button switch as well as the relays and DC power supply for connecting to external controllers or customer supplied switch. If you TMD was ordered with this accessory, for wiring details *see TMD-RY Wiring in Section 9.*

For touch screen controllers (AMX/Crestron), use voltage from the touch screen controllers to energize the relays. The maximum wiring length from the microprocessor control unit to the external control relay or switch cannot exceed 6 foot. For wiring suggestions *see Touch Screen Wiring Options 1 and 2 in Section 9.*

7. Mounting Screens

After checking the lift operation and all clearances, the screen can be installed. Raise the lift. Remove the Screen Mount Adapter Brace from the lift by removing the five bolts holding it to the telescoping column. See the Column Dimension drawing for the location of the Screen Mount Adapter. Use the Mount Adapter Brace as a template to drill two or three ¼- inch holes in your screen mount aligned with the two or three upper holes in the adapter. The holes in the Mount Adapter Brace are spaced 4 ½ inches apart. The holes on your screen mount should be centered horizontally so that your screen will be balanced from right to left on the lift. Your screen mount should be placed vertically so that to top of your screen is level with the top of the Column telescoping column. If this is not possible, mount your screen as low as practical on the telescoping column. Re-attach the Mount Adapter Brace to the telescoping column using the bottom two bolts. Use the three top bolts to attach your screen mount to the Mount Adapter Brace and the Column telescoping column. Follow the screen mount instructions for mounting the screen to the screen mount. Once the screen is mounted to the Column lift slowly lower the lift carefully. Check all clearances as the lift and screen are lowered. Ensure that the closure panel fits securely into the furniture top.

8. Cable Management

Video, Audio, Power Cable can be attached to the inside of the furniture with a service loop behind the telescoping column. Keep the cables away from moving parts. **See the Column Cable Management Drawing in Section 9.**

9. Drawings and Schematics

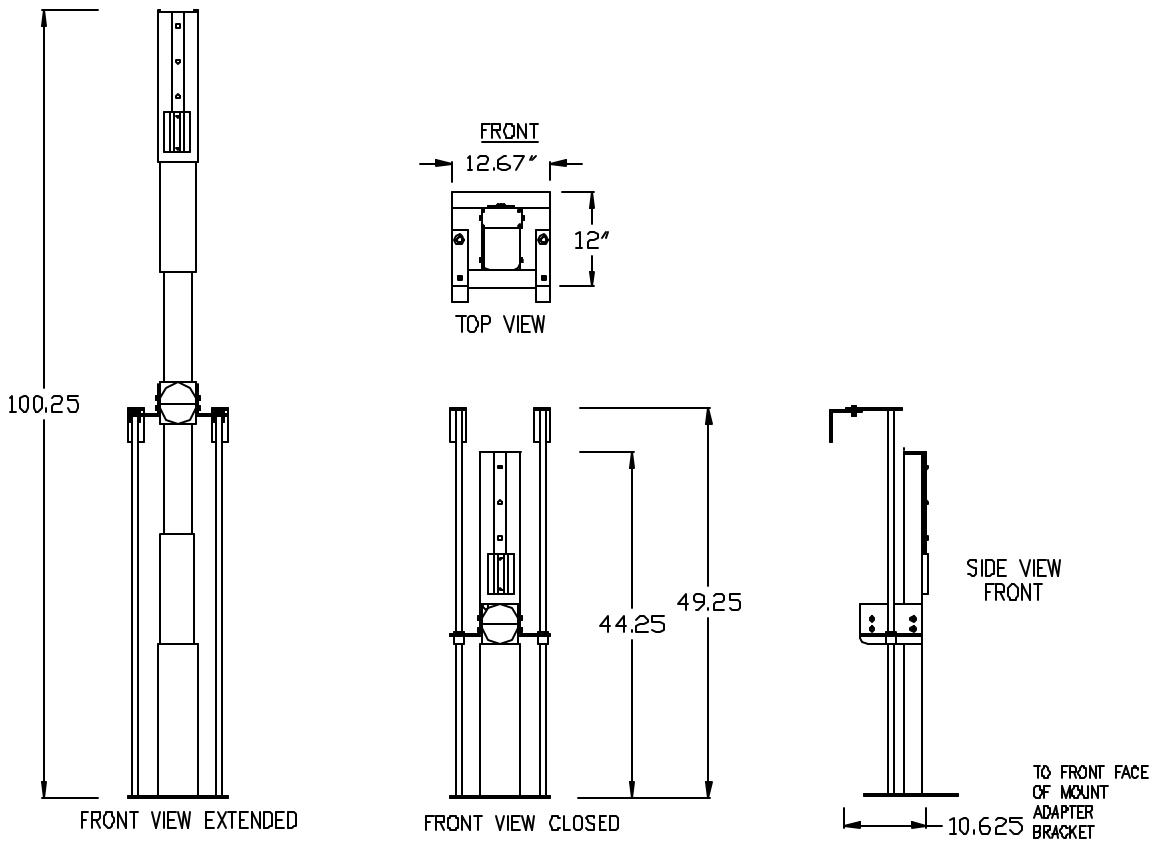


Figure 1 Column Lift Dimension Drawing

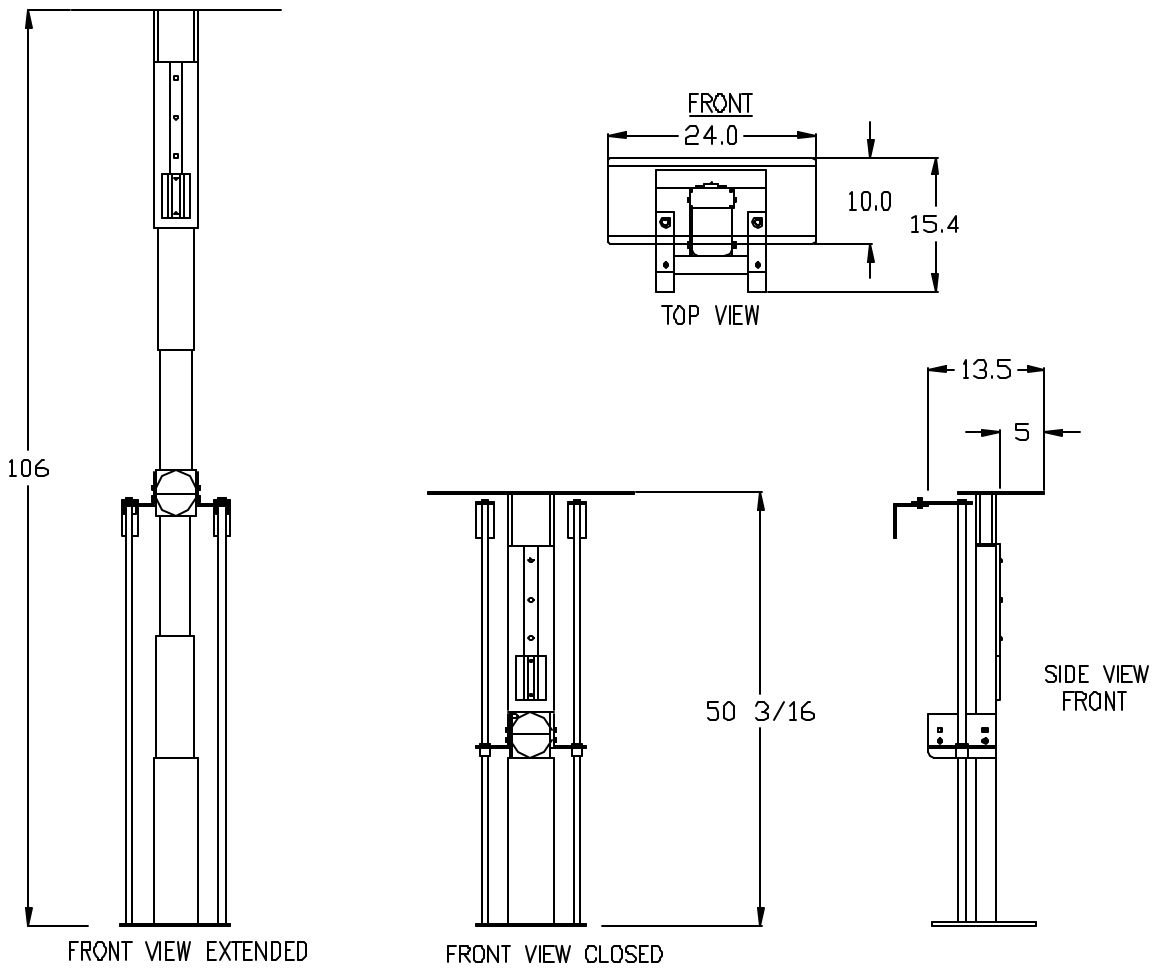


Figure 2 Column Lift with Closure Adapter Plate

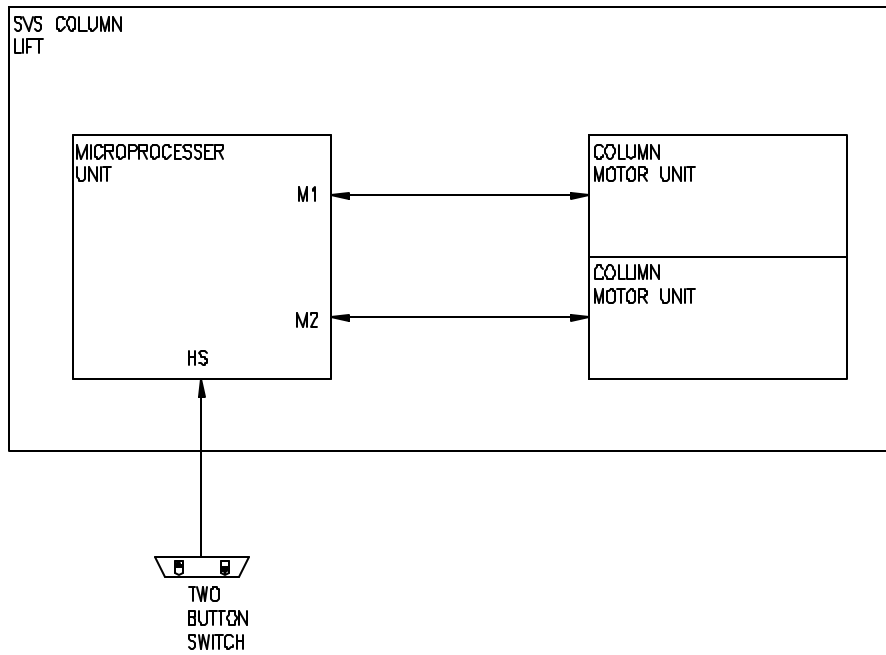


Figure 3 Column Lift Wiring

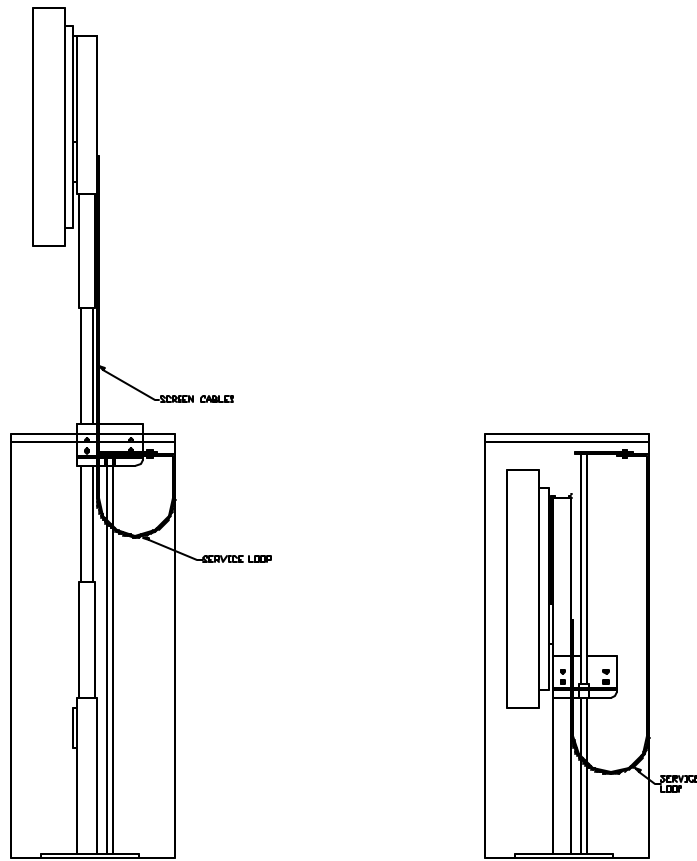
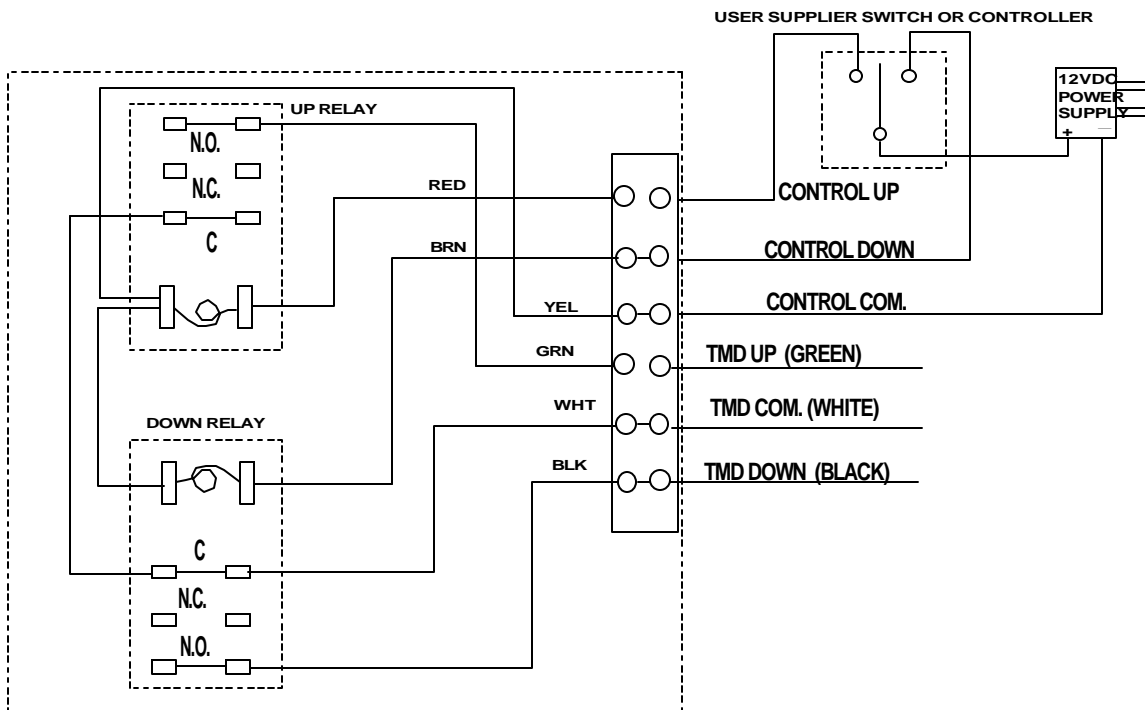
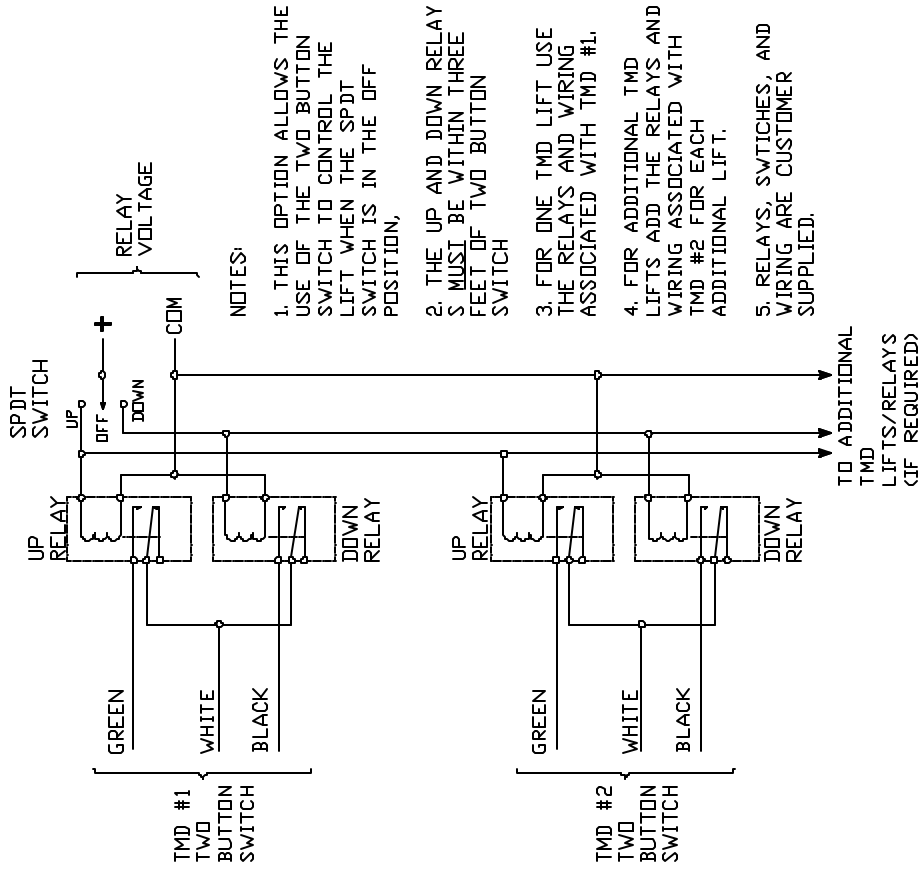


Figure 4 Column Lift Cable Management

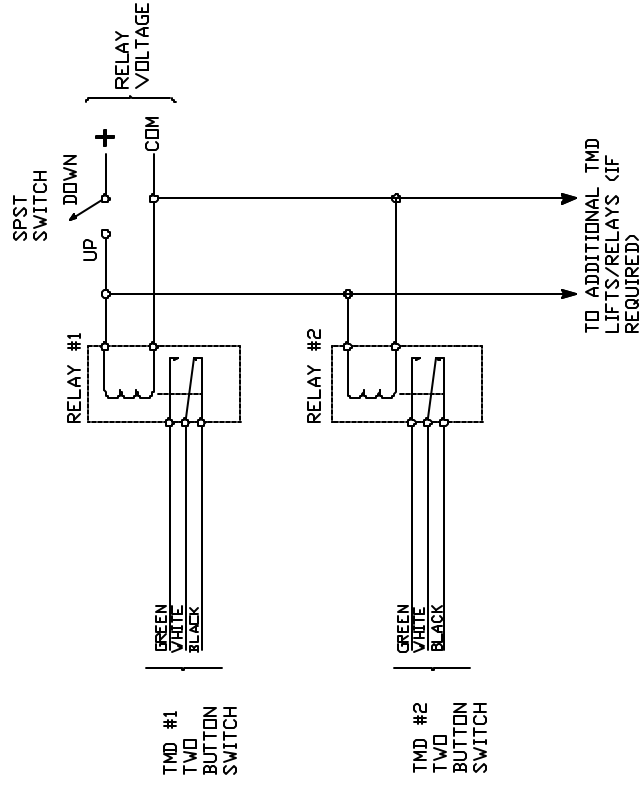


Schematic 1 TMD-RY Accessory

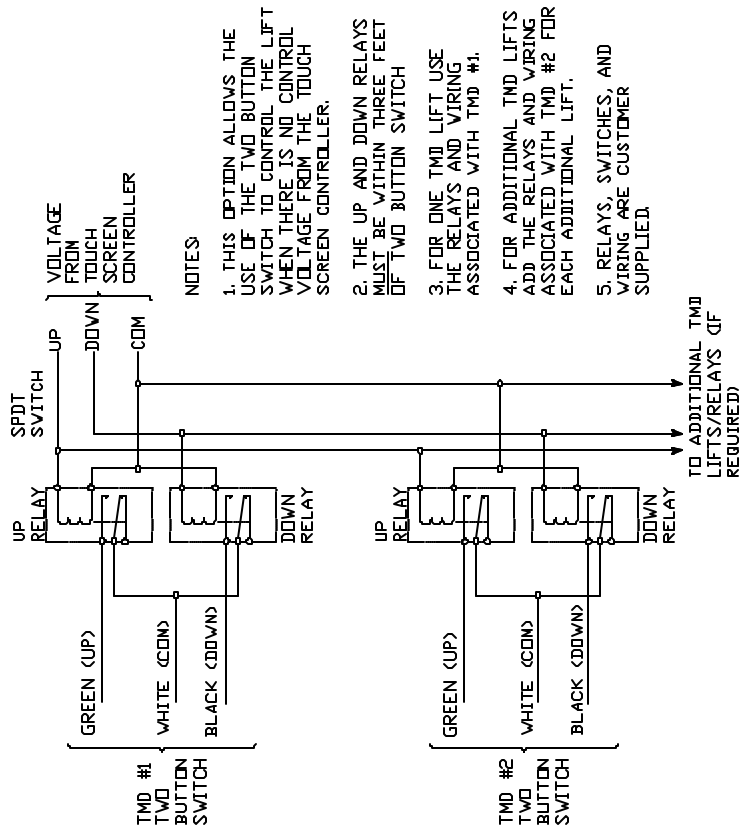
TMD EXTERNAL CONTROL WIRING OPTION 2



TMD EXTERNAL CONTROL WIRING OPTION 1



TMD TOUCH SCREEN CONTROLLER WIRING OPTION 2



NOTES

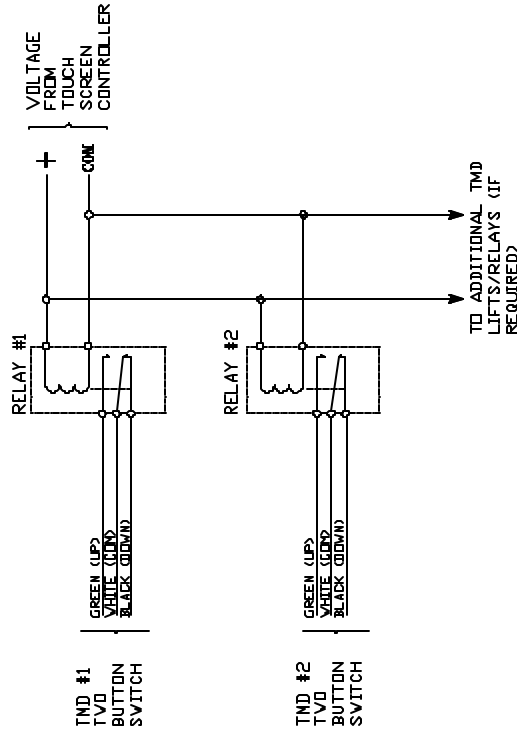
1. THIS OPTION ALLOWS THE USE OF THE TWO BUTTON SWITCH TO CONTROL THE LIFT WHEN THERE IS NO CONTROL VOLTAGE FROM THE TOUCH SCREEN CONTROLLER.
2. THE UP AND DOWN RELAYS MUST BE WITHIN THREE FEET OF TWO BUTTON SWITCH
3. FOR ONE TMD LIFT USE THE RELAYS AND WIRING ASSOCIATED WITH TMD #1.
4. FOR ADDITIONAL TMD LIFTS ADD THE RELAYS AND WIRING ASSOCIATED WITH TMD #2 FOR EACH ADDITIONAL LIFT.
5. RELAYS, SWITCHES, AND WIRING ARE CUSTOMER SUPPLIED.

TOUCH SCREEN CONTROLLER NOTES

1. APPLY CONSTANT VOLTAGE FROM THE TOUCH SCREEN CONTROLLER TO THE UP AND COMMON WIRES TO RAISE THE LIFT.
2. APPLY A CONSTANT VOLTAGE FROM THE TOUCH SCREEN CONTROLLER TO THE DOWN AND COMMON WIRE TO LOWER CAUSE THE LIFT.
3. PROGRAM A TIME OUT AFTER THE NORMAL RUN TIME FOR RAISING AND LOWERING THE LIFT.
4. PROGRAM AN EXCLUSIVE LOCKOUT ON UP AND DOWN SO BOTH THE UP AND DOWN CANNOT BE ACTIVATED AT THE SAME TIME.

COMPANY	DATE	SCALE	REVISED BY
SVS INC.	10/14/2004	2-50	RELAY #2
PROJECT NO.	D.B.	CH.	SVS TMD TOUCH SCREEN CONTROLLER OPTION 2
DESIGNED BY	SVS	DATE	10/14/2004
CHECKED BY	2-50	REVISION	RELAY #2
PHONE	800-922-4747	REVISION	10/14/2004

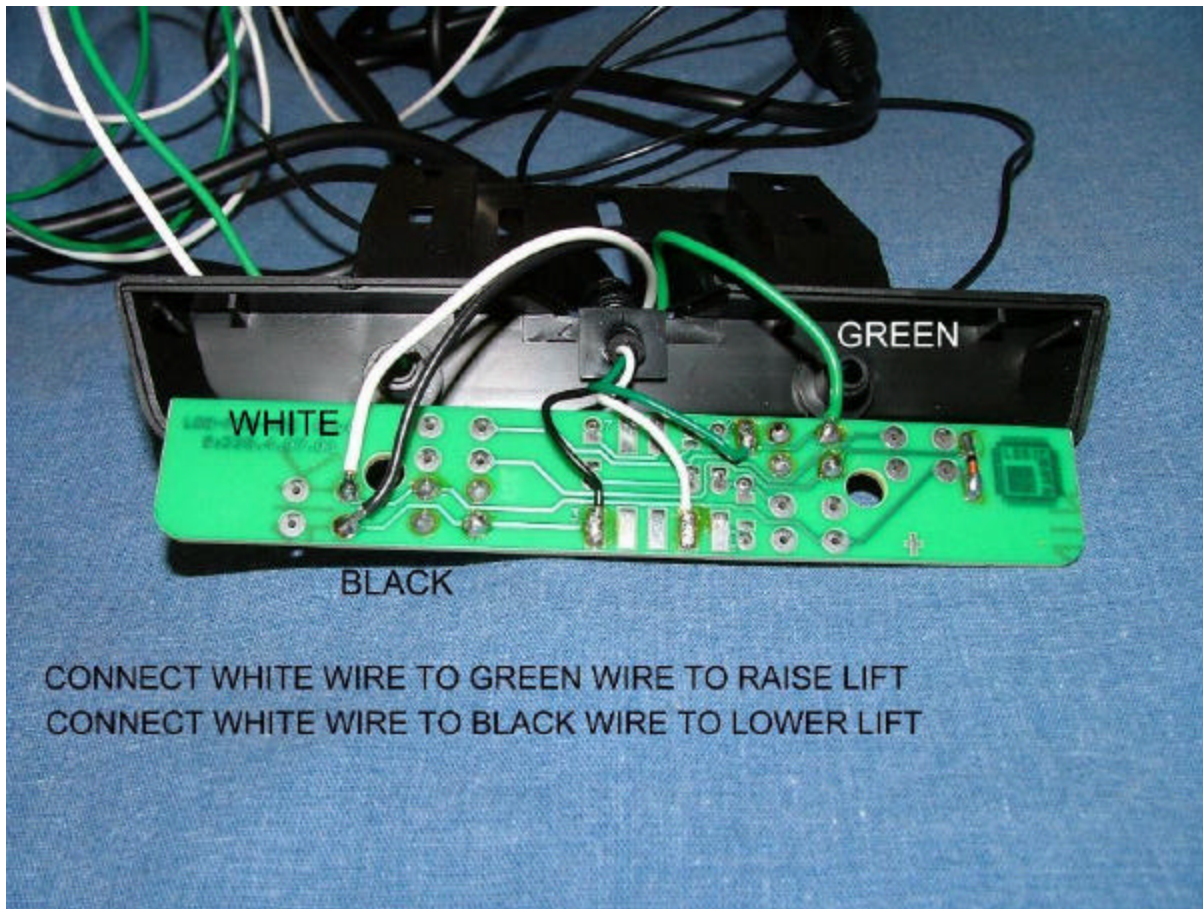
TMD TOUCH SCREEN CONTROLLER WIRING OPTION 1



NOTES

1. THIS OPTION DISABLES THE TWO BUTTON SWITCH.
2. THE UP AND DOWN RELAYS MUST BE WITHIN THREE FEET OF TWO BUTTON SWITCH.
3. FOR ONE TMD LIFT USE RELAY #1 AND ASSOCIATED WIRING.
4. FOR ADDITIONAL TMD LIFTS ADD RELAY #2 AND ASSOCIATED WIRING FOR EACH ADDITIONAL LIFT.
5. A CONSTANT VOLTAGE FROM THE TOUCH SCREEN CONTROLLER IS REQUIRED TO KEEP THE LIFT IN THE UP POSITION.
6. THE TMD WILL LOWER WITH NO VOLTAGE FROM THE TOUCH SCREEN CONTROLLER.
7. RELAYS, SWITCHES, AND WIRING ARE CUSTOMER SUPPLIED.

COMPANY	DATE	SCALE	REVISED BY
SVS INC.	10/14/2004	2-50	RELAY #2
PROJECT NO.	D.B.	CH.	SVS TMD TOUCH SCREEN CONTROLLER OPTION 1
DESIGNED BY	SVS	DATE	10/14/2004
CHECKED BY	2-50	REVISION	RELAY #2
PHONE	800-922-4747	REVISION	10/14/2004



To connect the TMD to an external controller solder of the add the Green, White, and Black wire to the TMD Two Button switch as shown above. Connect the White and Green wires to raise the lift and the White and Black wires to lower the lift. The Green, White, and Black wire cannot extend more than 6-feet from the Two Button switch. Be careful when soldering the wires to the Two Button switch. **Damage to the switch from adding the wires is not covered by the lift warranty.**

LCD TMD Lift Warranty

Service Labor: SVS, Inc. provides factory labor warranty 90 days from the ship date (invoice date).

Parts: SVS, Inc. will provide replacement parts that failed due to defects in materials or workmanship for a period of one (1) year from the invoice effective date. Proof of date of original purchase will be required before warranty performance is rendered.

This warranty only covers failures due to defects in materials or workmanship that occur during normal use. It does not cover failures which result from accident, misuse, abuse, neglect, mishandling, misapplication, alteration, faulty installation, modification or service by anyone other than a factory authorized person or company.

Disconnecting the telescoping column from the microprocessor unit while the lift is at its end stops will cause the lift will lose synchronization and lift will have to be returned to SVS for repair. This repair is not covered by the lift warranty.

Please contact SVS, Inc. by phone or fax for return authorization. Unit can then be shipped to the factory, adequately insured, with shipping cost prepaid. COD not accepted on return shipments to SVS.

_____ Cut-Here _____

WARRANTY CARD

CUSTOMER NAME _____

SERIAL # TMD56 _____

ADDRESS _____

MODEL # TMD56 USA _____

CITY _____ ST _____ ZIP _____

DATE PURCHASED _____

PHONE _____

DATE INSTALLED _____

PURCHASED FROM _____

SEND TO: SVS, INC

DEALER NAME _____

2513 JENKS AVENUE

ADDRESS _____

PANAMA CITY, FL 32405

CITY _____ ST _____ ZIP _____

PHONE _____

PHONE: 850-522-4747

FAX: 850-522-4739

CARD MUST BE SENT IN WITHIN 10 DAYS FROM DATE OF INVOICE