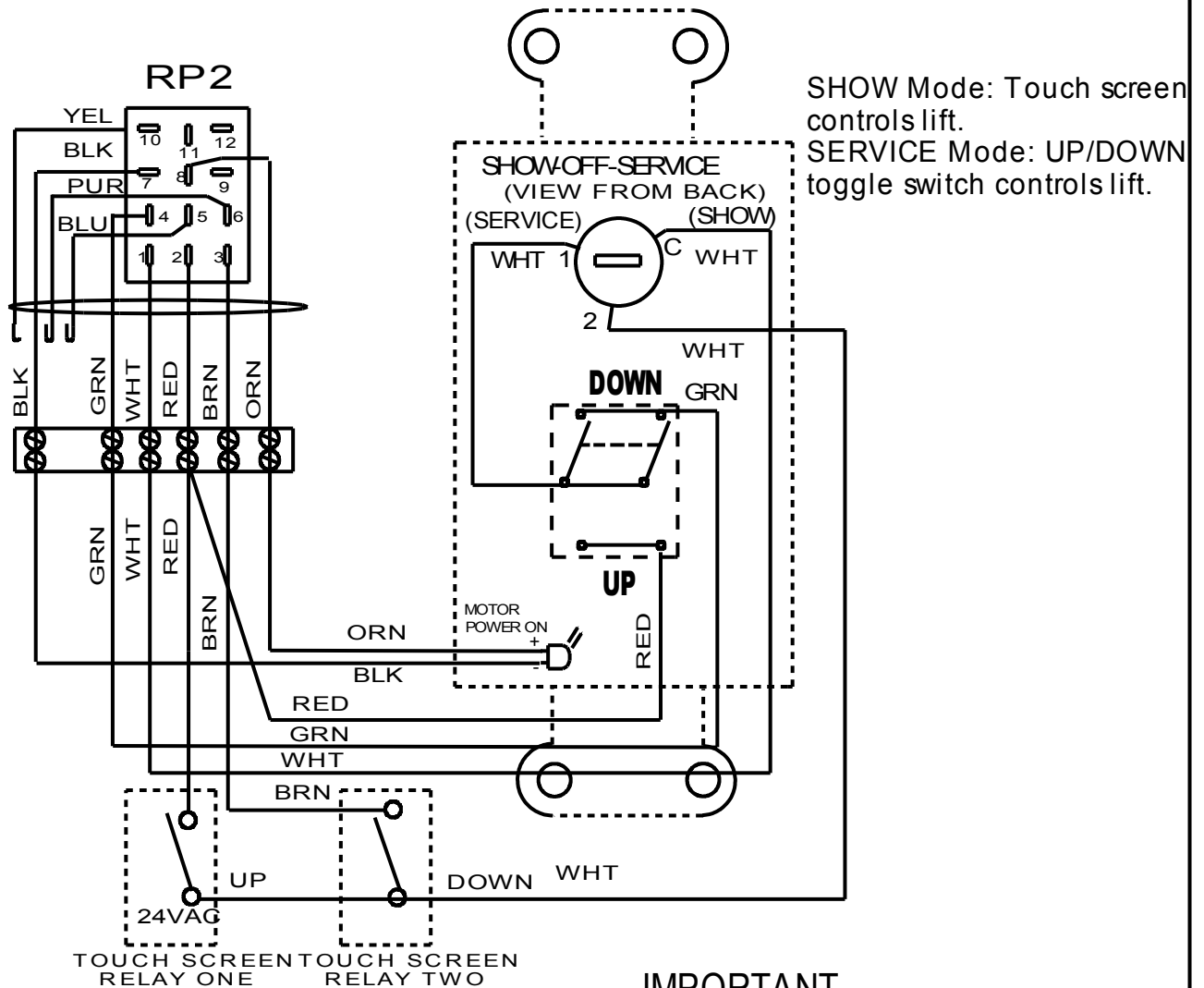


TOUCH SCREEN CONTROLLER REMOTE WIRING (EXAMPLE AMX OR CRESTRON. ETC.)



Note:

1. Program a release of relays to stop up and down.
2. Program a time out after the normal run time is exceeded.
3. Program an exclusive lockout on up and down so both the up and down cannot be activated at the same time.
4. Hold relays on to move lift, and release to stop lift.

IMPORTANT

Not to be used with SVS Accessories:
#4 Power Sensor
#5 Power Sensor with Screen Control
#15 12 Volt Trigger

©COPYRIGHT		SVS, INC.			
DRAWN BY:	C.H.	11-92	PROJECT PROJECTOR LIFT		
CHECK BY:	C.H.	11-92			
DESIGNED BY:	SVS, INC	11-92	DRAWING NO. TCWIRE5 OPTION 2		
CAGE CODE:	0KPR7	2-89			
PHONE	850-522-4747		REVISION	RELEASE DATE	SER # AND UP
			6	7-00	400